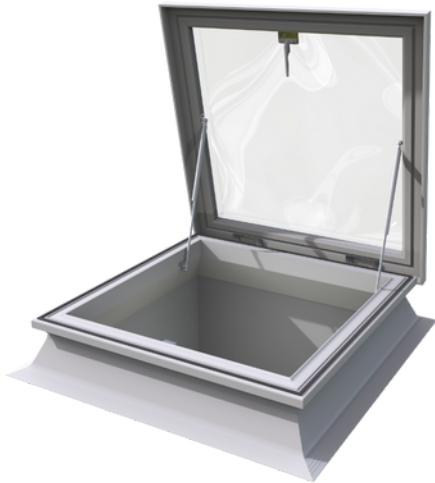


# Dome Access Hatch

This access hatch dome rooflight captures natural daylight whilst providing safe, easy access to roof spaces for maintenance or to open up roof spaces for terraces and roof gardens.



## Benefits

- Available in a range of sizes, with some standard sizes being available in as little as 2 days
- Large daylight and ventilation area
- Low profile dome for sleek appearance
- 10 year warranty available
- Quick and easy to install
- Manufactured in the UK

## Features

Available in standard sizes from 900 x 750mm up to 1200 x 1200mm square or 1800 x 900mm rectangle

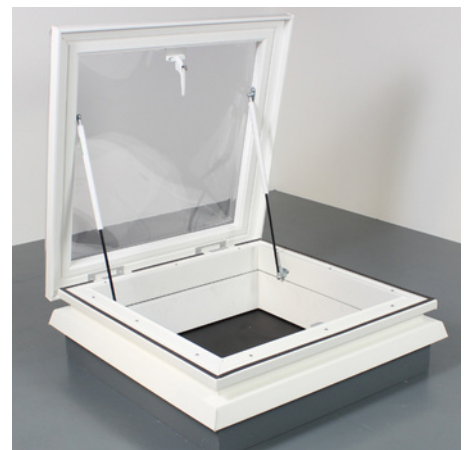
Units supplied with gas struts to ensure easy opening and closing

Range of kerb and glazing options available

Lockable internal handle(s) for easy operation and security

BBA approved

Tested to be non-fragile\* for safety.



\*Class B non-fragile to ACR[M]001 when new and fully installed in accordance with our instructions